



IDAHO DEPARTMENT OF
WATER RESOURCES

Administration of Ground Water Rights in the Upper Snake River Basin

Presented by James Cefalo
December 10, 2024





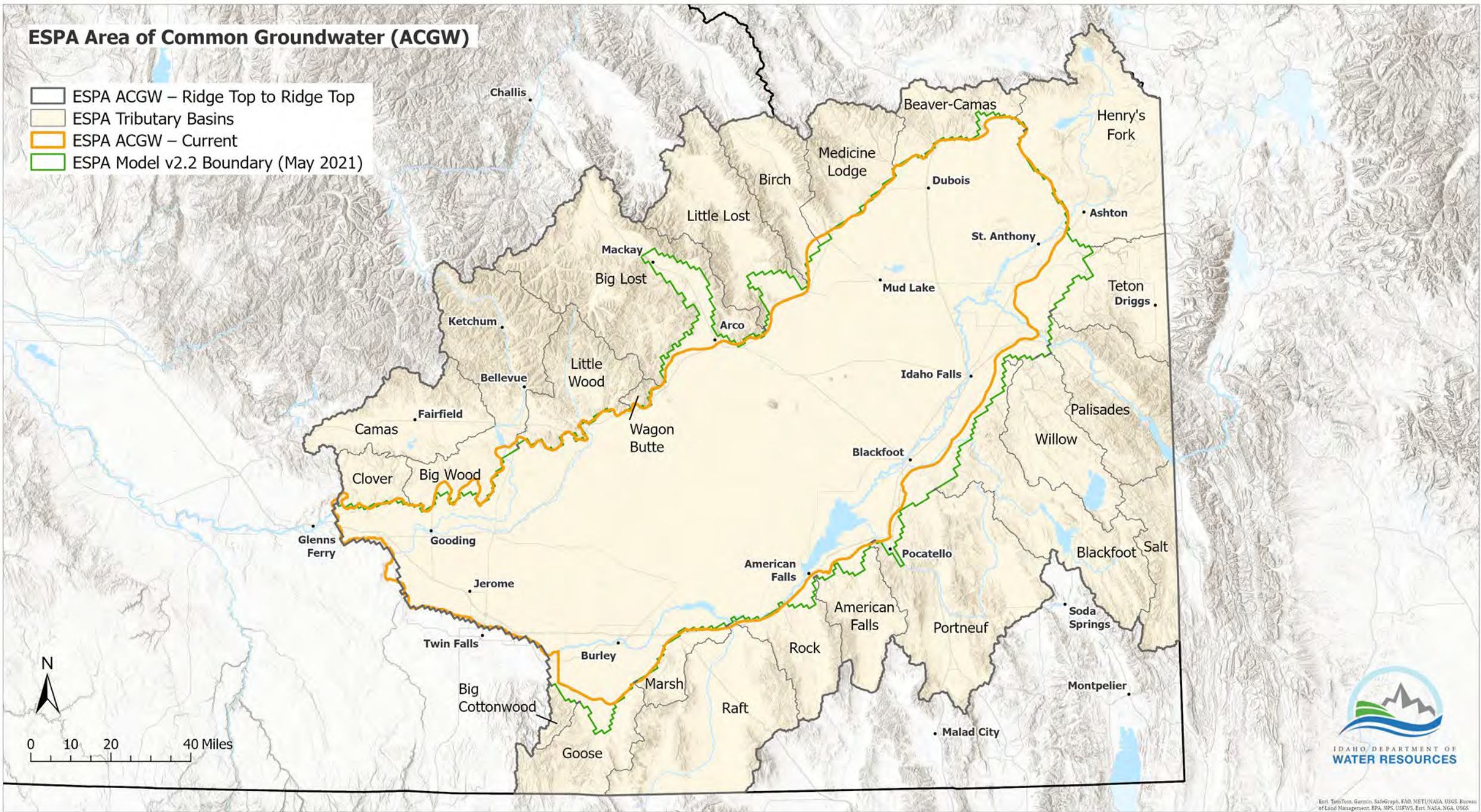
Area Having a Common Ground Water Supply

A ground water source within which the diversion and use of ground water or changes in ground water recharge affect the flow of water in a surface water source or within which the diversion and use of water by a holder of a ground water right affects the ground water supply available to the holders of other ground water rights.

Rule 10.01, Conjunctive Management Rules (IDAPA 37.03.11)

ESPA Area of Common Groundwater (ACGW)

- ESPA ACGW – Ridge Top to Ridge Top
- ESPA Tributary Basins
- ESPA ACGW – Current
- ESPA Model v2.2 Boundary (May 2021)



Esri, TomTom, Garmin, SafeGraph, FAO, METI/NASA, USGS, Bureau of Land Management, EPA, NPS, USFWS, Esri, NASA, NGA, USGS



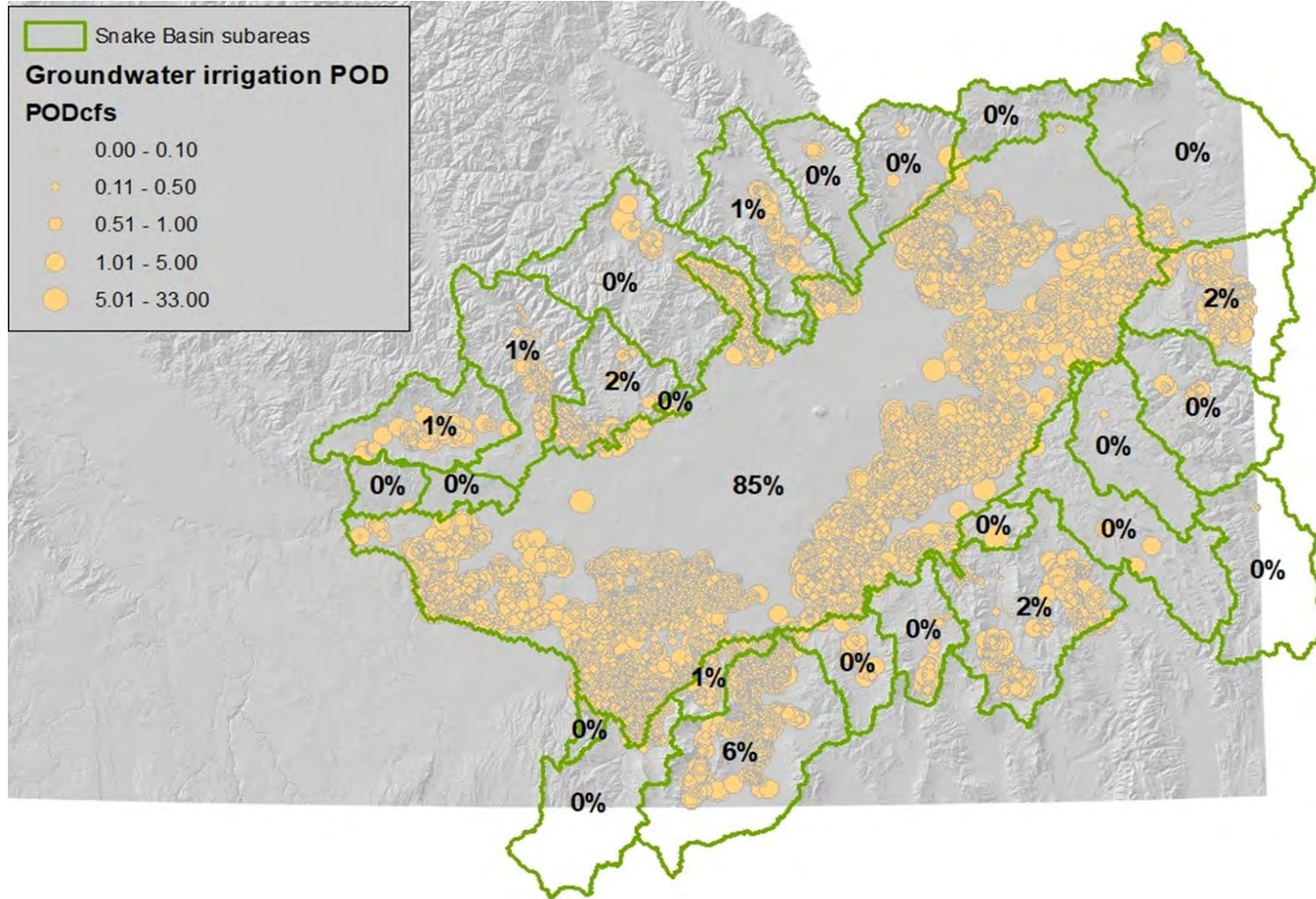
Idaho Code § 42-233c (amended in 2024)

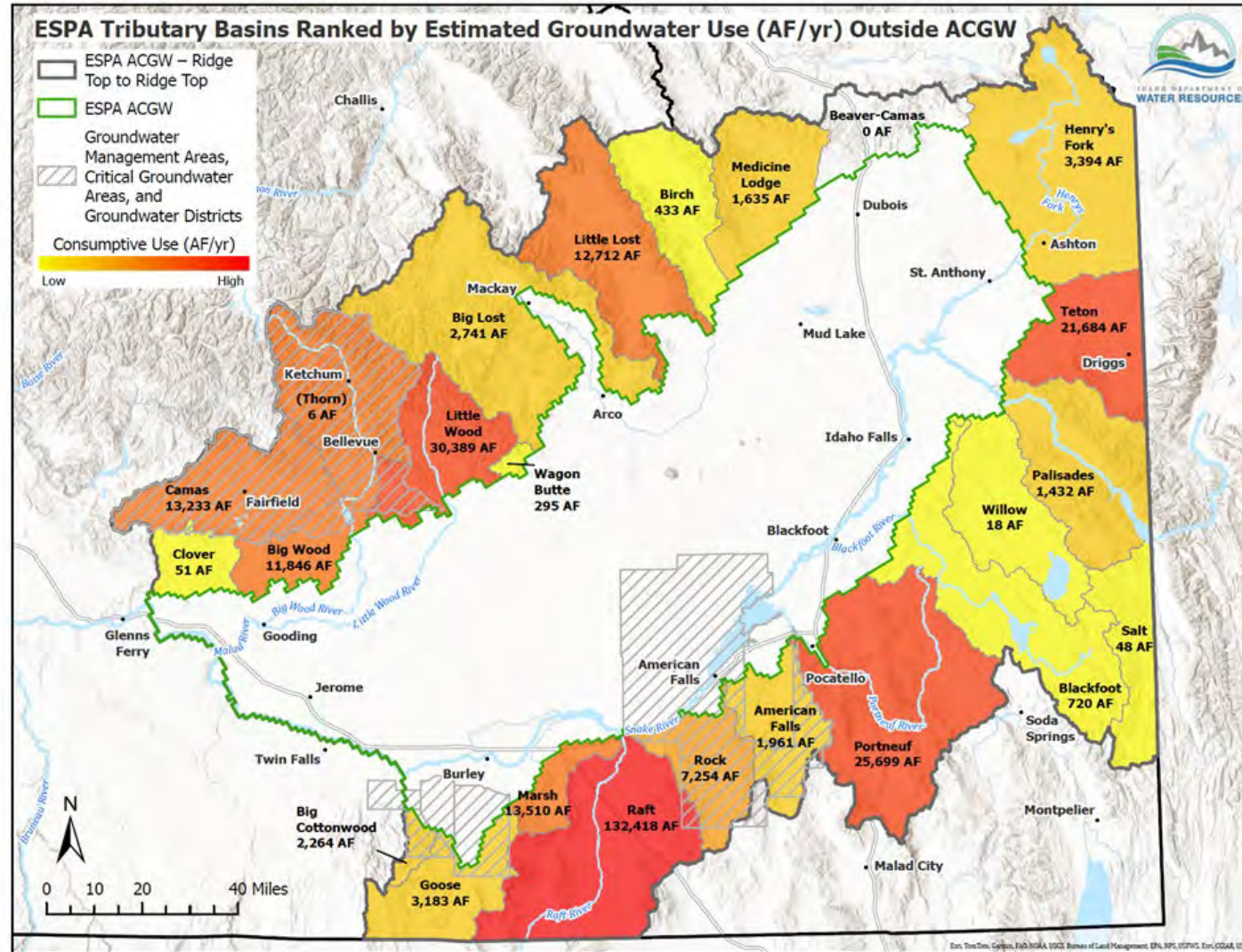
- Expands the ACGWS to the model boundaries of model ver. 2.2.
- Allows the ACGWS to be expanded to include tributary basins:
 - “The director of the department of water resources may expand the area having a common ground water supply for the eastern Snake plain aquifer to include tributary basins that affect the eastern Snake river plain aquifer.”
- Creates a public notice and hearing process for expansion orders.




Expanding ACGWS into a Tributary Basin:

1. Create water district for ground water rights.
2. Water users elect watermaster and set budget.
3. Inventory ground water diversions in water district.
4. Issue order requiring installation of measuring devices.
5. Confirm that measuring devices are properly installed.
6. Water users may choose to form Ground Water District.
(Chapter 52, Title 42, Idaho Code).
7. Issue an order expanding ACGWS to include tributary basin.
8. Water users may petition to join 2024 Mitigation Plan.




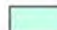
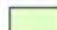


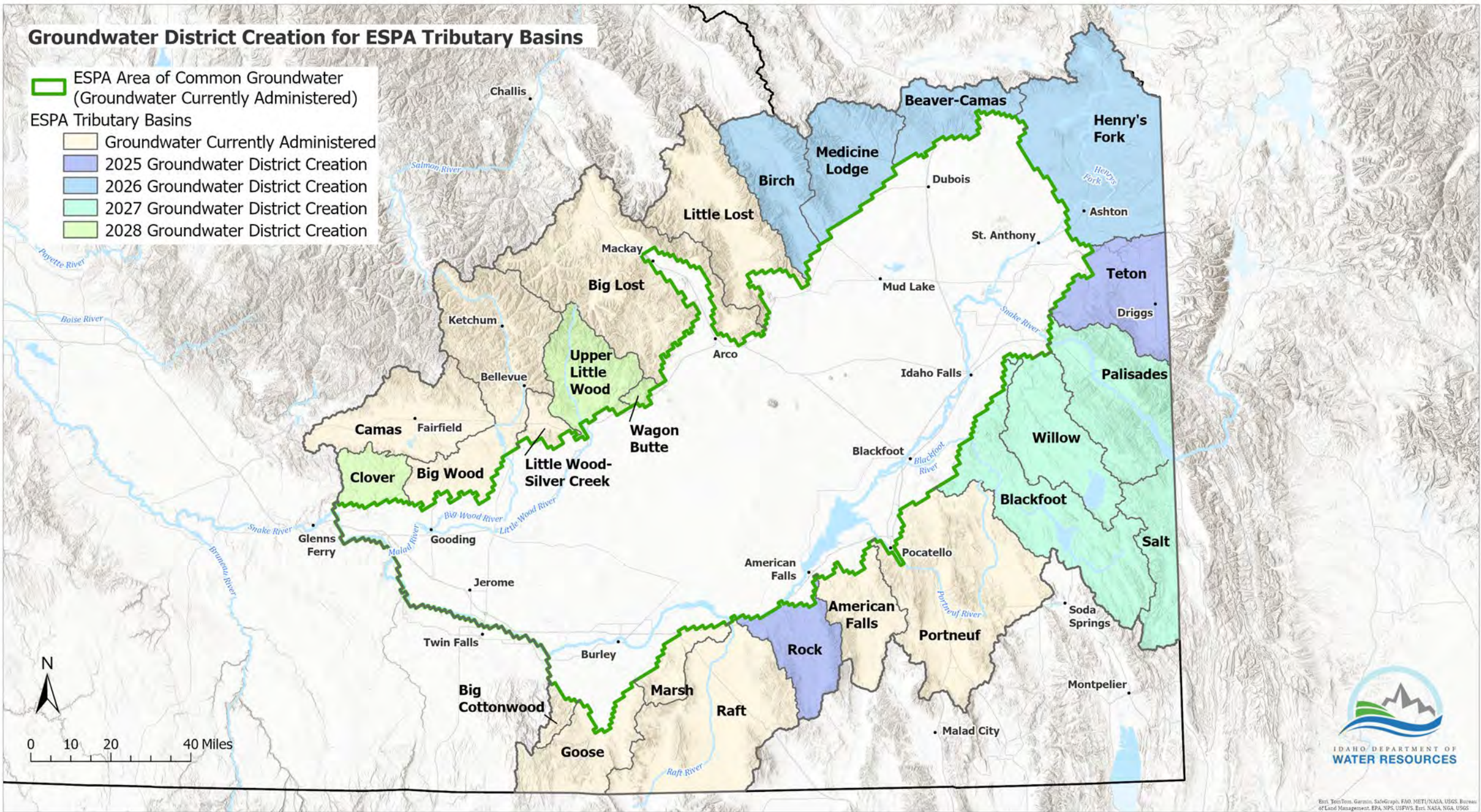


Groundwater District Creation for ESPA Tributary Basins

 ESPA Area of Common Groundwater (Groundwater Currently Administered)

ESPA Tributary Basins

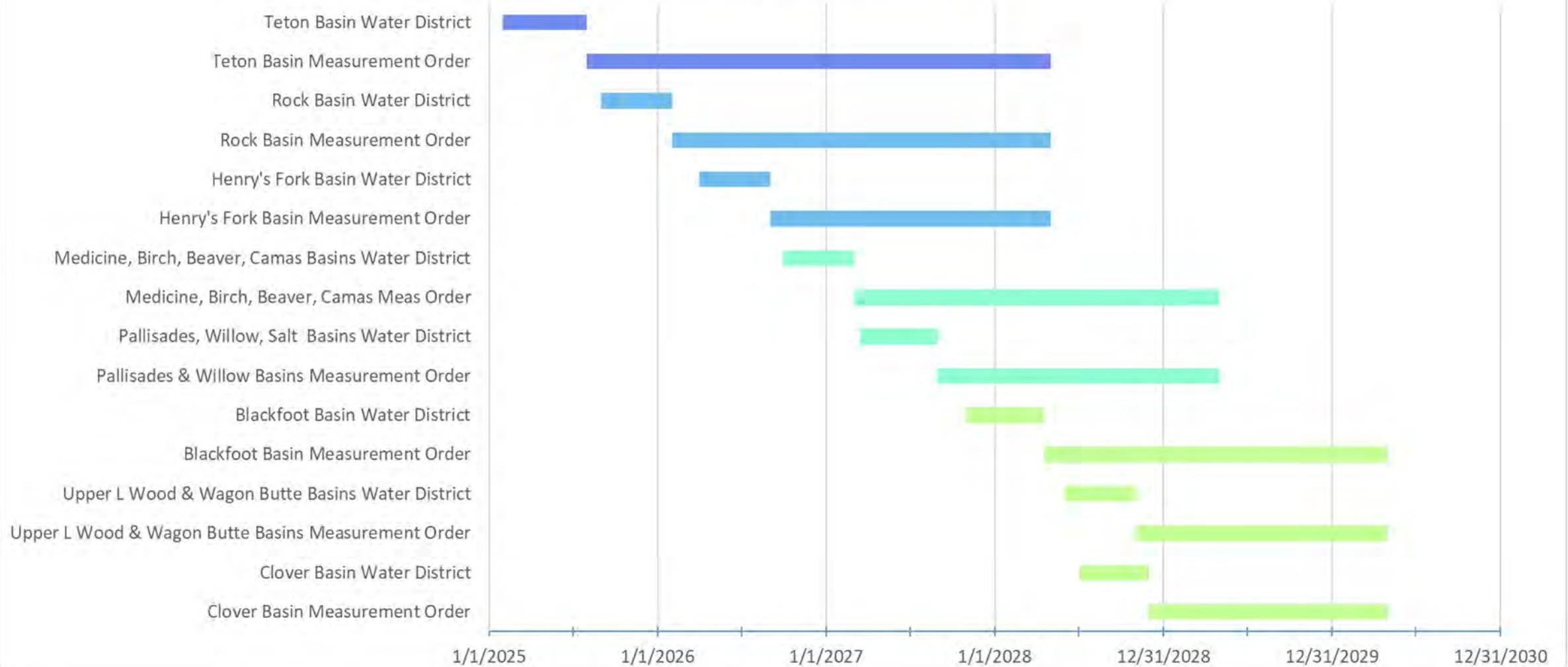
-  Groundwater Currently Administered
-  2025 Groundwater District Creation
-  2026 Groundwater District Creation
-  2027 Groundwater District Creation
-  2028 Groundwater District Creation



IDAHO DEPARTMENT OF WATER RESOURCES

Base: TomTom, Garmin, SatGraph, FAO, METI/NASA, USGS, Bureau of Land Management, EPA, NPS, USFWS, Esri, NASA, NGA, USGS

Create Water Districts to Administer and Measure Ground Water Diversions in ESPA Tributary Basins
(Start 2/1/2025, End 5/1/2030)





IDAHO DEPARTMENT OF
WATER RESOURCES

James Cefalo

208-525-7161

James.Cefalo@idwr.idaho.gov

